

74°39'00"W

74°38'15"W

74°37'30"W

74°36'45"W

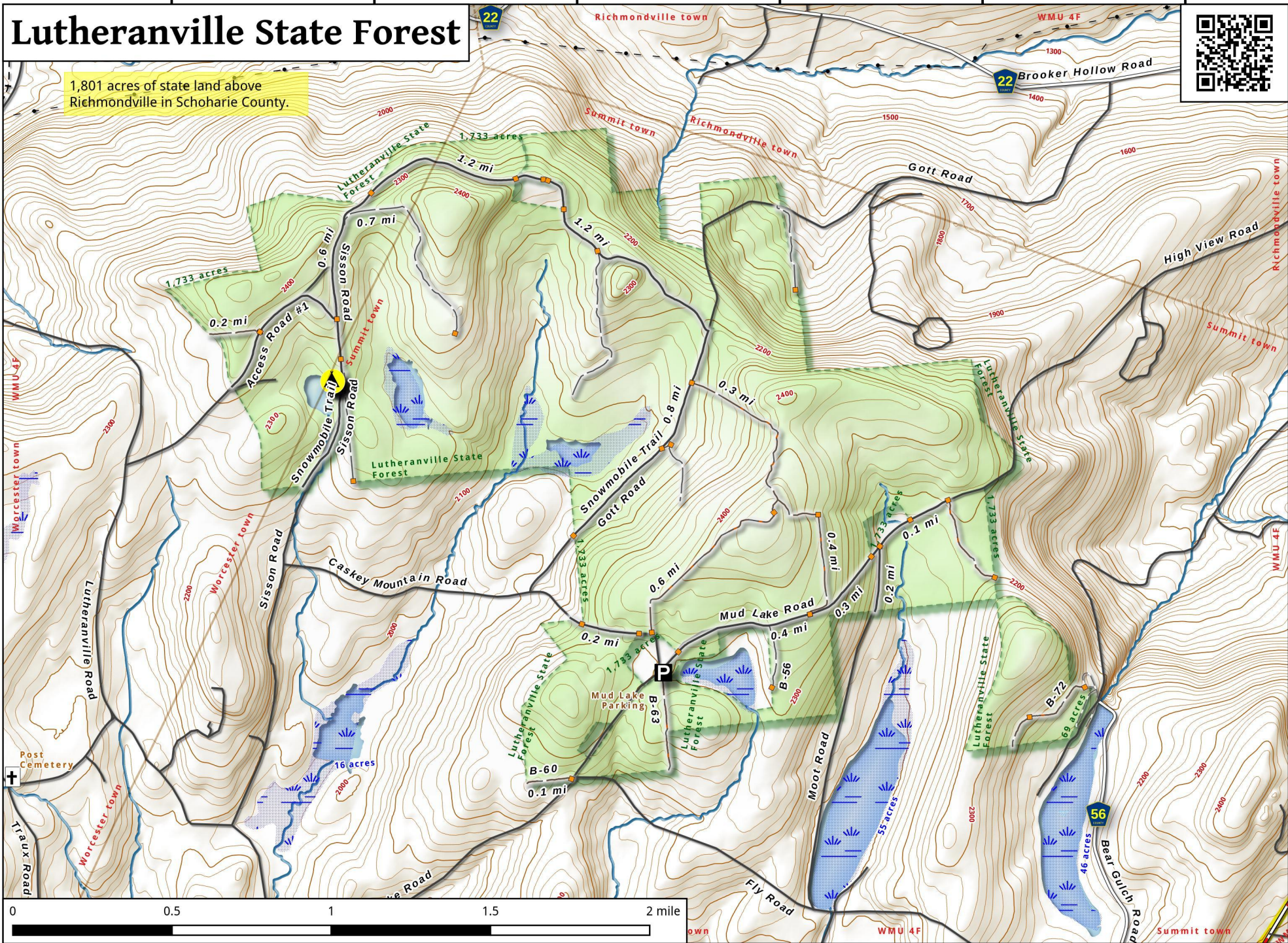
74°36'00"W

74°35'15"W

Lutheranville State Forest



1,801 acres of state land above Richmondville in Schoharie County.



42°37'30"N

42°36'45"N

42°36'00"N

42°35'15"N

Lutheranville State Forest Map, January 30, 2016 by AndyArthur.org in QGIS 2.12.3-Lyon and Python. Street Map is Copyright © OpenStreetMap contributors, CC BY-SA. NYSDEC/ Data: DEM, Borders, ADK Wetlands, Trails, Assets. True North. 1 inch = 0.4 miles. Projection: NAD83 / UTM zone 18N. Coordinates: 45" WGS 84. Contours are 20 feet.